

# Barrow upon Soar Neighbourhood Plan: Basic Conditions Statement

## Introduction

- 1 This Basic Conditions Statement has been prepared to accompany the Barrow upon Soar Neighbourhood Plan. It explains how the proposed Barrow upon Soar Neighbourhood Plan has been prepared in accordance with the Neighbourhood Planning General Regulations 2012 as amended by the Neighbourhood Planning (General) (Amendment) Regulations 2015 (The Regulations) and how the basic conditions of neighbourhood planning and other considerations as prescribed by Paragraph 8 of Schedule 4B of the Town and Country Planning Act 1990 have been met.
- 2 Paragraph 8 of Schedule 4B to the Town and Country Planning Act 1990 requires that Neighbourhood Development Plans must meet the following basic conditions:
  - i. the draft Neighbourhood Development Plan must have appropriate regard to national policies and advice contained in guidance issued by the Secretary of State;
  - ii. the draft Neighbourhood Development Plan must contribute to the achievement of sustainable development;
  - iii. the draft Neighbourhood Development Plan must be in general conformity with the strategic policies contained in the development plan for the area of the local planning authority, in this case the Charnwood Local Plan 2011 to 2028 Core Strategy;
  - iv. the draft Neighbourhood Development Plan must meet the relevant EU obligations; and
  - v. prescribed matters have been complied with in connection with the proposal for the Neighbourhood Development Plan.
- 3 This basic conditions statement addresses these requirements in four sections:
  - Section 2 demonstrates the conformity of the Barrow upon Soar Neighbourhood Plan with the National Planning Policy Framework;
  - Section 3 shows how the Barrow upon Soar Neighbourhood Plan will contribute to sustainable development;
  - Section 4 demonstrates the conformity of the Barrow upon Soar Neighbourhood Plan with the adopted Charnwood Local Plan 2011 to 2028 Core Strategy; and
  - Section 5 demonstrates compliance with the appropriate EU obligations and other prescribed matters.

- 4 The Barrow upon Soar Neighbourhood Plan is supported by a Consultation Statement, Equality Impact Assessment (included in this document at Appendix 1) and this Basic Conditions Statement.

### Submitting Body

- 5 The Barrow upon Soar Neighbourhood Plan is submitted by Barrow upon Soar Parish Council, which is a qualifying body as defined by the Localism Act 2011.

### Neighbourhood Area

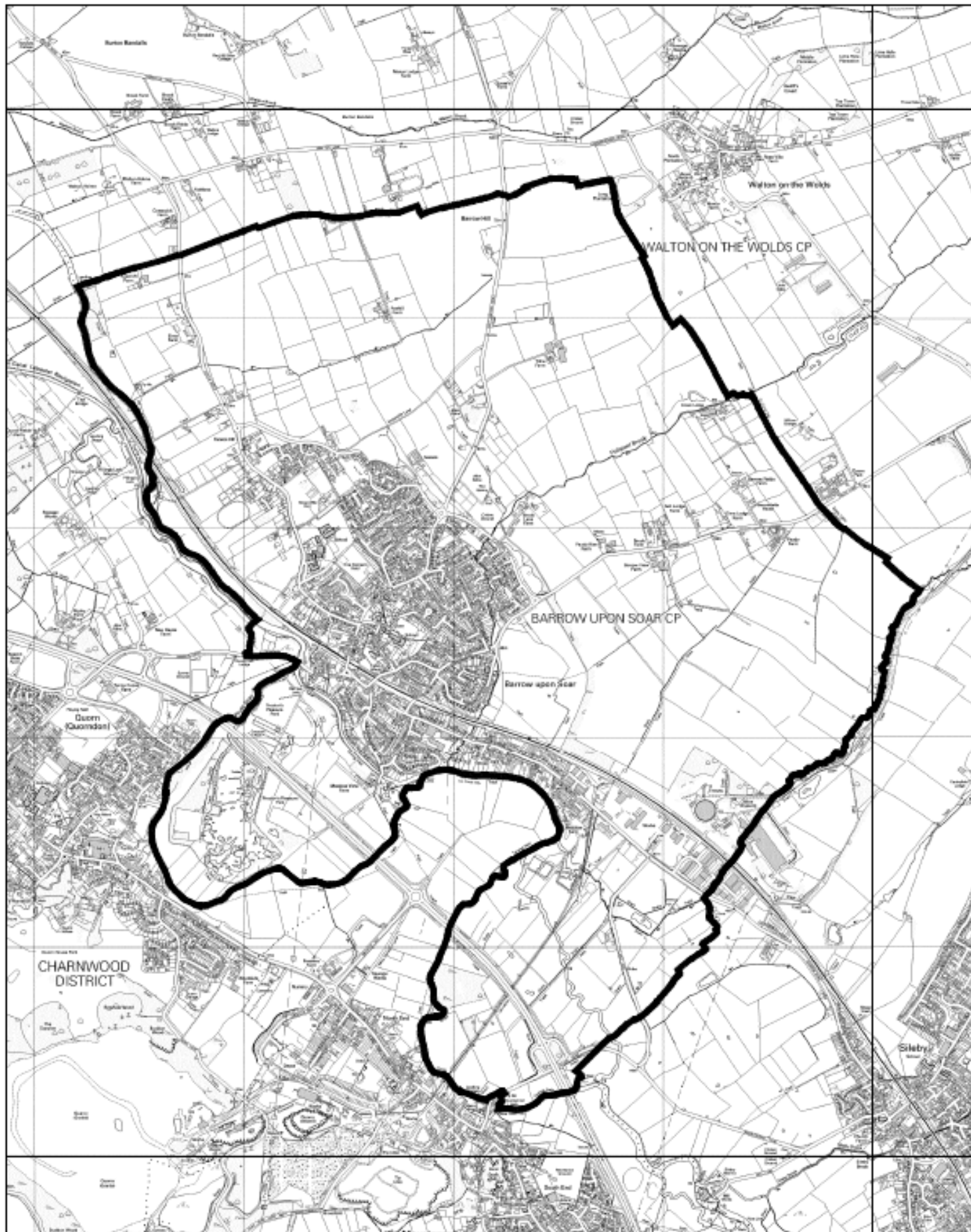
- 6 This Plan applies to the Parish of Barrow upon Soar which was designated as a Neighbourhood Area in February 2014. In accordance with part 2 of the Regulations, Charnwood Borough Council, the local planning authority, publicised the application from Barrow upon Soar Parish Council to produce a Neighbourhood Development Plan. The statutory six consultation period ended on 18th February 2014. One representation was received which was in support of the application. Barrow upon Soar received its Area designation in February 2014.
- 7 The Barrow upon Soar Neighbourhood Plan relates only to the development and use of land within the Parish of Barrow upon Soar and to no other Neighbourhood Areas.
- 8 It is the only Neighbourhood Development Plan in the designated area. No other Neighbourhood Development Plan exists nor is being prepared for part or all of the designated area.
- 9 The Barrow upon Soar Neighbourhood Plan covers the period up to 2028 as does the Charnwood Local Plan 2011 to 2028 Core Strategy which was adopted on 9 November 2015.
- 10 No provision for excluded development such as national infrastructure, minerals or waste development is contained within the Neighbourhood Plan.

### Barrow upon Soar: Location

- 11 The Barrow upon Soar Neighbourhood Plan Area contains the village of Barrow upon Soar. This is a large village in northern Leicestershire between Leicester and Loughborough. It lies on the east bank of the River Soar and near the A6 at Quorn.

### Involvement of the Local Community and Stakeholders

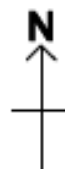
- 12 The Barrow upon Soar Neighbourhood Plan has been prepared by the Barrow upon Soar Parish Council with extensive input from the community and stakeholders as set out in the accompanying Consultation Statement. The Pre-Submission Draft Neighbourhood Plan has been consulted on as required by the Regulations and the responses have been recorded and changes have been made as per the schedule set out in the Summary of Consultee Responses and the Consultation Statement.



## Barrow Upon Soar Parish Boundary Map

Charnwood Borough Council  
 Council Offices  
 Southfield Road  
 Loughborough  
 Leicestershire  
 LE11 2TX

[www.charnwood.gov.uk](http://www.charnwood.gov.uk)



Scale: 1:25000

Date: 17-10-2013 Time: 12:35:03

This map will be a fair reproduction from  
 Ordnance Survey digital map data and  
 is not a legal document. It is the  
 responsibility of the Council for any  
 errors or omissions. It is not to be used  
 for any other purpose or liability.  
 Ordnance Survey map data is  
 protected by copyright.  
 © Crown copyright.

License No. 00002554

Ordnance Survey photography is a copyright  
 of the Ordnance Survey.

## Conformity with the National Planning Policy Framework

- 13 It is required that the Barrow upon Soar Neighbourhood Plan has regard to national policies and advice contained in guidance issued by the Secretary of State. This is principally provided by the National Planning Policy Framework.
- 14 It should be noted that not all sections of the National Planning Policy Framework will be relevant to the Barrow upon Soar Neighbourhood Plan as there is no legal requirement for a Neighbourhood Plan to provide policies covering all of the provisions within the National Planning Policy Framework. However, where a Neighbourhood Plan expresses a policy it must have appropriate regard to the relevant parts of the National Planning Policy Framework.
- 15 A key theme that runs throughout the National Planning Policy Framework is the presumption in favour of sustainable development. The National Planning Policy Framework specifies that the delivery of sustainable development is to be through the application of 12 core planning principles and the pursuit of 13 sustainability objectives supporting the three dimensions of sustainable development: economic, social and environmental. The 12 principles are that planning should:
1. be genuinely plan-led, empowering local people to shape their surroundings, with succinct local and neighbourhood plans setting out a positive vision for the future of the area. Plans should be kept up-to-date, and be based on joint working and co-operation to address larger than local issues. They should provide a practical framework within which decisions on planning applications can be made with a high degree of predictability and efficiency;
  2. not simply be about scrutiny, but instead be a creative exercise in finding ways to enhance and improve the places in which people live their lives;
  3. proactively drive and support sustainable economic development to deliver the homes, business and industrial units, infrastructure and thriving local places that the country needs. Every effort should be made objectively to identify and then meet the housing, business and other development needs of an area, and respond positively to wider opportunities for growth. Plans should take account of market signals, such as land prices and housing affordability, and set out a clear strategy for allocating sufficient land which is suitable for development in their area, taking account of the needs of the residential and business communities;
  4. always seek to secure high quality design and a good standard of amenity for all existing and future occupants of land and buildings;
  5. take account of the different roles and character of different areas, promoting the vitality of our main urban areas, protecting the Green Belts around them, recognising the intrinsic character and beauty of the countryside and supporting thriving rural communities within it;

6. support the transition to a low carbon future in a changing climate, taking full account of flood risk and coastal change, and encourage the reuse of existing resources, including conversion of existing buildings, and encourage the use of renewable resources (for example, by the development of renewable energy);
7. contribute to conserving and enhancing the natural environment and reducing pollution. Allocations of land for development should prefer land of lesser environmental value, where consistent with other policies in this Framework;
8. encourage the effective use of land by reusing land that has been previously developed (brownfield land), provided that it is not of high environmental value;
9. promote mixed use developments, and encourage multiple benefits from the use of land in urban and rural areas, recognising that some open land can perform many functions (such as for wildlife, recreation, flood risk mitigation, carbon storage, or food production);
10. conserve heritage assets in a manner appropriate to their significance, so that they can be enjoyed for their contribution to the quality of life of this and future generations;
11. actively manage patterns of growth to make the fullest possible use of public transport, walking and cycling, and focus significant development in locations which are or can be made sustainable; and
12. take account of and support local strategies to improve health, social and cultural wellbeing for all, and deliver sufficient community and cultural facilities and services to meet local needs.

16 This section considers the conformity of the Barrow upon Soar Neighbourhood Plan in respect of relevant policies within the National Planning Policy Framework and the following table identifies the sections of the National Planning Policy Framework that the Barrow upon Soar Neighbourhood Plan conforms with and supporting commentary.

Barrow upon Soar Neighbourhood Plan Policy	National Planning Policy Framework Paragraph	Regard to National Planning Policy Framework
<b>BuS1: Countryside – Supports and protects the character of the landscape and countryside in accordance with the Charnwood Local Plan 2011 – 2028 Core Strategy CS1.</b>	17	This policy seeks to direct development to sustainable locations where people would have access to jobs, services and facilities and provide opportunities to reduce the need to travel and alternative transport modes to the car. It considers the different role and character of different areas and the intrinsic character and beauty of the countryside in accordance with Core Planning Principle 5.
<b>BuS2: Ecology and Diversity: Expects development not to harm the network of local ecological features and habitats. New development will be expected to maintain and enhance these features for biodiversity gain.</b>	17, 109, 117	The Core Planning Principle 7 seeks the conservation and enhancement of the natural environment. This policy seeks to protect and enhance valued landscapes as well as minimise impacts on biodiversity and seek positives in biodiversity. It also has identified and mapped components of local ecological networks.
<b>BuS3: The Canal – This policy seeks to enhance and conserve the Grand Union Canal as a heritage asset, key strategic Green Infrastructure and wildlife corridor, recreation and tourism resource. New development should not detract from its character. Development should also aim to conserve and enhance and restore its diversity and ecology.</b>	17, 28, 73, 109,114, 126	The policy has regard to a range of issues contained within the National Planning Policy Framework. This policy supports the conservation of heritage assets as detailed in Core Planning Principle 10. It seeks to protect and enhance the multiple functions and benefits of this resource. See Core Planning Principles 9 and 12. It plans positively to retain a recreational and tourism resource. It also seeks to protect and enhance an integral part of wider network of green infrastructure. Sustainable rural tourism is supported, account taken of the character of the area and conserves and enhances the natural environment (Core Planning Principle 5)
<b>BuS4: Proctors Park – This policy seeks to, in the long-term, secure Proctors Park as a Country Park. In the meantime improvements in external appearance shall be sought.</b>	17, 28, 56, 57, 109	This policy seeks to protect character of the countryside and the SSSI (Core Planning Principle 5) and encourage the multiple benefits from the use of land including the recognition that some open land can perform several functions. (Core Planning Principle 9). It plans positively in respect of a recreational facility and supports sustainable rural tourism. A high quality of design is also sought (Core Planning Principle 4).



Barrow upon Soar Neighbourhood Plan Policy	National Planning Policy Framework Paragraph	Regard to National Planning Policy Framework
<b>BuS5: Local Heritage Assets – In determining planning applications regard will be had to the preservation and enhancement of identified Local Heritage Assets, including Locally listed buildings.</b>	17, 126, 135	This policy supports the conservation of heritage assets as detailed in Core Planning Principle 10. It recognises that heritage assets are an irreplaceable resource and seeks their conservation and enhancement and plans positively with respect to non-designated heritage assets.
<b>BuS6: Design - Seeks development to respect and enhance the character of the area and to contribute positively to the creation of well-design buildings and spaces.</b>	17, 56, 58, 60	Core Planning Principle 4 specifies that planning should always seek to secure high quality design. The subject of good design is attributed great importance in the National Planning Policy Framework and is a key aspect of sustainable development and should contribute positively to making places better for people. This policy has regard to this approach and facilitates the promotion or reinforcement of local distinctiveness. It provides a robust approach to design and is supported by the Barrow upon Soar Village Design Statement.
<b>BuS7: Local Green Spaces - Identifies Local Green Spaces within Barrow upon Soar which will be protected. New development will not normally be supported.</b>	17, 76-78	Regard is had to national policy which allows for neighbourhood plans to identify for protection green areas of importance to them. This policy allows account to be taken of the character and role of these areas as detailed in Core Planning Principle 5.
<b>BuS8: Community Services and Facilities - This policy supports the retention of existing services and facilities unless it is no longer needed or viable or a replacement is provided, of equivalent or better provision.</b>	17, 28, 70	The Core Planning Principle 12 states that planning should deliver sufficient community and cultural facilities and services to meet local needs. The policy supports the retention and development of local services and community facilities in villages and plans positively against the unnecessary loss of facilities that meet day to day needs.
<b>BuS9: Village Centres – This policy supports the role of Barrow upon Soar Village Centre as a District Centre that provides for a range of village centre uses. It supports the</b>	17, 23, 24, 26	The policy supports sustainable economic development (Core Planning Principle 3) and the designation of the village centre as a District Centre. It seeks an appropriate mix of main village centre uses to support its vitality and viability, with shops as the main use. It requires the application of the

Barrow upon Soar Neighbourhood Plan Policy	National Planning Policy Framework Paragraph	Regard to National Planning Policy Framework
<p><b>improvement of its shops and facilities, the application of the sequential test when considering main village centre uses, the application of an impact assessment and for shops to remain the dominant uses.</b></p>		<p>sequential test for applications for main village centre uses that are not in the existing village centre. It also sets a locally set threshold for impact assessments.</p>
<p><b>BuS10: Village Centre Car Parking – This policy supports additional parking facilitated through the extension and improvements to existing car parks and the provision of cycle parking. Loss of existing car parking will not be supported unless it is replaced by equivalent or better provision. New developments within or on the edge of the Village Centre will be expected to incorporate additional car parking spaces.</b></p>	<p>17, 28, 29, 30, 38, 40</p>	<p>This policy supports access to facilities by those without access to a car and seeks to improve the accessibility to a location where a range of facilities and services are situated near (Core Planning Principle 11). It would help to improve parking opportunities within the village centre. These improvements in accessibility would help support the use of existing village services and business. In setting local parking standards consideration has been given to issues such as accessibility and the type of development.</p>
<p><b>BuS11: Barrow Health Centre – This policy does not support development that would involve the relocation of the Health Centre from the village. New additional surgeries will be supported.</b></p>	<p>17, 28, 70</p>	<p>The Core Planning Principle 12 states that planning should deliver sufficient community and cultural facilities and services to meet local needs. This policy supports the retention and development of local services and community facilities in villages and plans positively against the unnecessary loss of facilities that meet day to day needs.</p>
<p><b>BuS12: Primary School – This policy supports the provision of an additional primary on land outside the Limits to Development provided it is well connected to the village and is accessible for those without a car. Any proposal for extension to the existing primary school to accommodate additional pupils should also</b></p>	<p>17, 28, 32, 38, 72</p>	<p>The Core Planning Principle 12 states that planning should deliver sufficient community and cultural facilities and services to meet local needs. The policy proactively supports the development of a school to meet community needs. This policy supports Core Planning Principle 11 which seeks to focus development in locations which are or can be made sustainable. An improvement in highway safety is also being sought to the existing school.</p>



Barrow upon Soar Neighbourhood Plan Policy	National Planning Policy Framework Paragraph	Regard to National Planning Policy Framework
<b>improve parking and traffic management arrangements.</b>		
<b>BuS13: Community Centre- Any new proposal for a Community Centre will be subject to the sequential test. If a location were to be considered outside the Limits to Development, the site should be well connected to the village and accessible to those without access to a car. Once sequentially tested development must have regard to a number of other matters such as impact on other community facilities, the services it provides, impact on surroundings and amenity, and parking demands.</b>	17, 28, 30, 58, 70	The Core Planning Principle 12 states that planning should deliver sufficient community and cultural facilities and services to meet local needs. This policy supports the retention and development of local services and community facilities in villages and plans positively for the provision of community facilities. It also supports Core Planning Principle 11 which seeks to focus development in locations which are or can be made sustainable and facilitates the use of sustainable modes of transport. The policy supports a range of other issues contained in the NPPF such as design and amenity (Core Planning Principle 4).
<b>BuS14: Infrastructure – Seeks new development to support the provision of new and/or improved infrastructure including education provision, community and healthcare facilities (Health Centre and Community Library) and sports and recreation provision.</b>	17, 70, 72	Core Planning Principles 12 states that planning should deliver sufficient community and cultural facilities and services to meet local needs. This policy plans positively for the provision of community facilities and other local services to enhance the sustainability of communities and residential environment. This policy has regard to the promotion of healthy communities and the delivery of social, recreational, educational and community facilities and services that meet the community needs.
<b>BuS15: Road Network – New housing development of over ten dwellings will not be supported unless it can be demonstrated that traffic conditions will not be made worse.</b>	17, 32	This policy supports Core Planning Principle 11 and the development of sustainable forms of transport, as well as development which seeks to secure highway safety.
<b>BuS16: Barrow upon Soar Railway Station – This policy supports the upgrade of the Midland</b>	17, 29, 35	This policy supports Core Planning Principle 11 and the development of sustainable forms of transport.

Barrow upon Soar Neighbourhood Plan Policy	National Planning Policy Framework Paragraph	Regard to National Planning Policy Framework
<b>Main Line and improvements in car parking provision, access and facilities at Barrow upon Soar Railway Station.</b>		
<b>BuS17: Walking and Cycling – New development should retain and incorporate linkages to the Public Right of Way networks. This policy also seeks to improve off-carriageway cycling and cycle parking through partnership working.</b>	17, 35, 75	This policy supports Core Planning Principle 11 and the development of sustainable forms of transport, making use of walking and cycling links. The Plan looks for opportunities to allow for pedestrian and cycle movements and supports the protection of public rights of way and access.
<b>BuS18: Housing Provision – This policy recognises that the evidenced minimum housing provision for Barrow upon Soar has been met. It does also provide the circumstances when housing development within the defined Limits to Development, will be supported.</b>	17, 32, 47, 56, 58, 123	This policy promotes sustainable development by seeking to locate housing where it will enhance or maintain the vitality of existing communities (Core Planning Principles 3, 8 and 11). It seeks to deliver the housing needs of an area (Core Planning Principle 3) that is of a design that reflects the surrounding area and with a good standard of amenity and a safe and suitable access for all (Core Planning Principle 4 and 5). The housing need has been informed by that identified in the Charnwood Local Plan (Core Strategy).
<b>BuS19: Meeting the Housing Needs of Older People – Seeks a mix of housing types responsive to local needs, informed by the most up to date evidence of housing need. Identifies a particular need for the housing needs of older households to be met and the circumstances when such development will be permitted outside of the Limits to Development.</b>	17, 32, 47, 50, 56, 58, 123	The Core Planning Principle 3 requires the need to objectively identify and meet the housing needs of an area. The Barrow upon Soar Neighbourhood Plan supports this approach and this policy supports the provision of affordable housing to meet the needs of different groups in its community. It seeks to deliver the housing needs of an area (Core Planning Principle 3) that is of a design that reflects the surrounding area and with a good standard of amenity and a safe and suitable access for all (Core Planning Principle 4 and 5). This policy also promotes sustainable development through seeking to locate housing where it will enhance or maintain the

Barrow upon Soar Neighbourhood Plan Policy	National Planning Policy Framework Paragraph	Regard to National Planning Policy Framework
		vitality of existing communities, which would allow for the use of non-car modes to access to local facilities (Core Planning Principles 3, 8 and 11).
<b>BuS20: Sileby Road – This policy identifies land for employment development. It identifies the type of development sought, the incorporation of appropriate landscaping and biodiversity improvement, flood and surface water drainage appropriately addressed, the safeguarding of the conveyor route and protection of amenity.</b>	17, 19, 35, 94, 109, 123	This policy supports sustainable economic development in accordance with Core Planning Principle 3. It proactively plans to support its growth and protects sustainable transport modes for the movement of goods, whilst seeking to avoid noise and other adverse impacts, as a result of new development, from giving rise to significant adverse impacts on health and quality of life. It seeks the conservation and enhancement of the natural environment (Core Planning Principle 7) including positive biodiversity benefits and takes into account flood risk (Core Planning Principle 6)
<b>BuS21: Rural Economy – Provides policy support for conversion and new buildings for business and enterprise within the countryside.</b>	17, 28, 32, 56	This policy supports sustainable economic development in accordance with Core Planning Principle 3 that is of a high-quality design (Core Planning Principle 4) with a safe and suitable access for all. It supports a prosperous rural economy and mirrors the approach contained within the NPPF.

## Contributing to sustainable development

17 Sustainable development is about positive growth- making economic, environmental and social progress for this and future generations. The Barrow upon Soar Neighbourhood Plan must contribute to the achievement of sustainable development of which there are three dimensions: economic, social and environmental. These dimensions give rise to the need for the planning system to perform several roles:

- an economic role - contributing to building a strong, responsive and competitive economy, by ensuring that sufficient land of the right type is available in the right places and at the right time to support growth and innovation; and by identifying and coordinating development requirements including the provision of infrastructure;
- a social role - supporting strong, vibrant and healthy communities, by providing the supply of housing to meet the needs of present and future generations; and by creating a high quality built environment, with accessible local services that reflect the community's needs and support its health, social and cultural well-being; and
- an environmental role - contributing to protecting and enhancing our natural, built and historic environment; and as part of this, helping to improve biodiversity, use natural resources prudently, minimise waste and pollution, and mitigate and adapt to climate change including moving to a low carbon economy.

18 The following section however summarises how the relevant sustainability objectives of the National Planning Policy Framework compare with the policies of the Barrow upon Soar Neighbourhood Plan.

National Planning Policy Framework Sustainability Objective	How the Barrow upon Soar Neighbourhood Plan supports objective
<b>1 - Building a strong competitive economy</b>	Supporting housing provision to meet identified requirements, with appropriate infrastructure, and providing for housing that meets local needs. Supporting sustainable economic growth and the rural and tourism economy.
<b>2 - Ensuring the vitality of town centres</b>	Supporting the provision of safe and sustainable links from development to services and local facilities, the retention of key services and facilities, the protection of the vitality and viability of the Village Centre and the planning for additional village centre car parking.
<b>3 - Supporting a prosperous rural economy</b>	Supporting the retention and development of key local services and community facilities. Supporting the local economy including the conversion of existing buildings and the development of new buildings in the countryside. The Grand Union Canal is also to be enhanced and conserved as a recreation and tourism resource.

National Planning Policy Framework Sustainability Objective	How the Barrow upon Soar Neighbourhood Plan supports objective
<b>4 - Promoting Sustainable Transport</b>	Supporting a balanced approach to an improved transport infrastructure including the provision of additional village car parking and cycle parking, development well connected to the village and its facilities and accessible to those without access to a car, development required to have a negligible impact on existing traffic conditions and congestion . There is also support for proposals to improve access and facilities at the railway station, improvement of linkages and access to cycle ways and public right of ways, sustainable modes for transportation of goods and a safe and suitable access for all.
<b>5 - Supporting high quality communications infrastructure</b>	Not applicable.
<b>6 - Delivering a wide choice of high quality homes</b>	Supporting a supply of housing in order to meet assessed needs. Supporting appropriate development within the Limits to Development. Seeking a mix of property types and tenure mix based on demographic projections and local evidence of housing need.
<b>7 - Requiring good design</b>	Includes policies to require good design and reflect local distinctiveness, including landscape as well as the built environment.
<b>8 - Promoting healthy communities</b>	Requires development to have safe and suitable access for all including footpath links, retention of linkages to the Public Rights of Way network and improvements in the provision of off-carriageway cycling, protection of the countryside, strategic Green Infrastructure, Local Green Spaces and improvements in sports and recreation provision.
<b>9 - Protecting Green Belt Land</b>	Not applicable.
<b>10 - Meeting the challenge of climate change, flooding and coastal change</b>	Seeks new and improved pedestrian and cycle links. Requires developers to address flood risk and surface water disposal and to incorporate sustainable drainage systems into new development.
<b>11 - Conserving and enhancing the natural environment</b>	Protects the character of the countryside, key Strategic Green Infrastructure and Local Green Space. Protects natural landscape from the harmful impacts of development. Requires the impact of development not to harm valued landscapes and to maintain and enhance ecological corridors and landscape features for biodiversity.

National Planning Policy Framework Sustainability Objective	How the Barrow upon Soar Neighbourhood Plan supports objective
<b>12 - Conserving and enhancing the historic environment</b>	Prevents the loss of the historic landscape and the preservation and enhancement of heritage assets, including non-designated assets of local importance.
<b>13 - Facilitating the sustainable use of minerals</b>	Not applicable.



## Conformity with the strategic policies of the Local Plan

- 19 Neighbourhood Development Plans must demonstrate that they are in general conformity with the strategic policies of the adopted development plan for the local area. The current adopted plan for the area is the Charnwood Local Plan 2011 to 2028 Core Strategy which was adopted 9 November 2015.
- 20 The following section identifies how the Policies of the Barrow upon Soar are in general conformity with the relevant strategic policies of the Charnwood Local Plan 2011 to 2028 Core Strategy.
- 21 The Barrow upon Soar Neighbourhood Plan is considered to conform to the following policies of the Charnwood Local Plan 2011 to 2028 Core Strategy. The table below provides a further explanation of the conformity.

### Charnwood Local Plan 2011 to 2028 Core Strategy

- CS1: Development Strategy
- CS2: High Quality Design
- CS3: Strategic Housing Needs
- CS6: Employment and Economic Development
- CS9: Town Centres and Shops
- CS10: Rural Economic Development
- CS12: Green Infrastructure
- CS13: Biodiversity and Geodiversity
- CS14: Heritage
- CS15: Open Space, Sports and Recreation
- CS17: Sustainable Travel
- CS18: The Local and Strategic Road Network
- CS24: Delivering Infrastructure

Barrow upon Soar Neighbourhood Plan Policy	Charnwood Local Plan 2011-2028 Core Strategy Policies	Explanation of Barrow upon Soar Neighbourhood Plan Conformity with the Charnwood Local Plan Core Strategy
<b>BuS1: Countryside</b>	CS1, CS11	<ul style="list-style-type: none"> <li>Supports the protection of the Countryside through locating new development to those locations with access to jobs, services and facilities and</li> </ul>

Barrow upon Soar Neighbourhood Plan Policy	Charnwood Local Plan 2011-2028 Core Strategy Policies	Explanation of Barrow upon Soar Neighbourhood Plan Conformity with the Charnwood Local Plan Core Strategy
		<p>opportunities to use non-car modes of transport.</p> <ul style="list-style-type: none"> <li>▪ Supports and protects the character of the countryside</li> </ul>
<b>BuS2: Ecology and Diversity</b>	CS13	<ul style="list-style-type: none"> <li>▪ Recognises that sites of ecological interest are important individually and also collectively as they form part of an ecological network.</li> <li>▪ Seeks to ensure new development does not harm these features but also expects new development to conserve and enhance these features.</li> <li>▪ Seeks a net gain in biodiversity.</li> </ul>
<b>BuS3: The Canal</b>	CS10, CS12, CS13, CS14	<ul style="list-style-type: none"> <li>▪ Supports the rural economy through supporting the Canal as a tourism and leisure resource, seeking development appropriately designed for the character of the locality.</li> <li>▪ Protects and enhances the Grand Union Canal and its corridor as a green infrastructure asset.</li> <li>▪ Protects and enhances its natural environment and its value as a heritage asset</li> </ul>
<b>BuS4: Proctors Park</b>	CS2, CS10, CS12, CS13	<ul style="list-style-type: none"> <li>▪ Supports leisure uses that will benefit the River Soar</li> <li>▪ Protection of a green infrastructure asset and supports improvement to the River Soar corridor.</li> <li>▪ Support development that seeks to enhance, restore or recreate the biodiversity of the SSSI.</li> <li>▪ Seeks for development to make a positive contribution to the locality</li> </ul>
<b>BuS5: Local Heritage Assets</b>	CS14	<ul style="list-style-type: none"> <li>▪ Supports the conservation and enhancement of the borough's heritage assets</li> </ul>
<b>BuS6: Design</b>	CS2	<ul style="list-style-type: none"> <li>▪ Requires new development to make a positive contribution to the borough</li> <li>▪ Specifically states support for the requires of Policy CS2 of the Charnwood Local Plan Core Strategy</li> </ul>

Barrow upon Soar Neighbourhood Plan Policy	Charnwood Local Plan 2011-2028 Core Strategy Policies	Explanation of Barrow upon Soar Neighbourhood Plan Conformity with the Charnwood Local Plan Core Strategy
<b>BuS7: Local Green Spaces</b>	CS15	<ul style="list-style-type: none"> <li>▪ Policy supports the protection of local green spaces when done through a Neighbourhood Plan</li> </ul>
<b>BuS8: Communities Services and Facilities</b>	CS1	<ul style="list-style-type: none"> <li>▪ Supports the safeguarding of services and facilities in the Service Centre of Barrow upon Soar (as defined in the Charnwood Local Plan: Core Strategy)</li> </ul>
<b>BuS9: Village Centre</b>	CS9	<ul style="list-style-type: none"> <li>▪ Supports development which seeks to support the centre's vitality and vitality</li> <li>▪ Requires the application of the sequential test to the location of proposals for main town centre uses.</li> <li>▪ Requires an impact assessment, subject to a specific threshold for retail development outside of the village centre.</li> </ul>
<b>BuS10: Village Centre Car Parking</b>	CS18	<ul style="list-style-type: none"> <li>▪ Seeks an appropriate level of car parking provision and to maximise the efficiency of the local road network.</li> </ul>
<b>BuS11: Barrow Health Centre</b>	CS1	<ul style="list-style-type: none"> <li>▪ Supports the safeguarding of services and facilities in the Service Centre of Barrow upon Soar (as defined in the Charnwood Local Plan: Core Strategy)</li> </ul>
<b>BuS12: Primary School</b>	CS1, CS17, CS18	<ul style="list-style-type: none"> <li>▪ Seeks to provide for the needs of the community.</li> <li>▪ Seeks to positively respond to sustainable development which contributes to meeting needs.</li> <li>▪ Supports sustainable travel and provide appropriate levels of parking</li> <li>▪ Supports walking and cycling links from the development to services and facilities</li> </ul>
<b>BuS13: Community Centre</b>	CS1, CS2, CS17, CS18	<ul style="list-style-type: none"> <li>▪ Seeks to provide for the needs of the community.</li> <li>▪ Seeks to provide development in sustainable locations which contributes to meeting needs.</li> <li>▪ Safeguards services and facilities</li> <li>▪ Seeks a designed development that respects the character of</li> </ul>

Barrow upon Soar Neighbourhood Plan Policy	Charnwood Local Plan 2011-2028 Core Strategy Policies	Explanation of Barrow upon Soar Neighbourhood Plan Conformity with the Charnwood Local Plan Core Strategy
		<p>the area and protects the amenity of residents</p> <ul style="list-style-type: none"> <li>▪ Supports sustainable travel and provide appropriate levels of parking</li> <li>▪ Supports walking and cycling links from the development to services and facilities.</li> </ul>
<b>BuS14: Infrastructure</b>	CS24	<ul style="list-style-type: none"> <li>▪ Facilitates the provision of infrastructure which is considered necessary to serve a proposed development</li> <li>▪ Facilitates the impacts of development to be mitigated through the provision of infrastructure</li> <li>▪ Allows issues of viability to be taken into account when considering the cost of infrastructure provision</li> </ul>
<b>BuS15: Road Network</b>	CS17, CS18	<ul style="list-style-type: none"> <li>▪ Seeks to manage the impact of traffic to avoid further congestion</li> <li>▪ Will require new development to look at non-car modes and sustainable transport improvements</li> </ul>
<b>BuS16: Barrow upon Soar Railway Station</b>	CS17	<ul style="list-style-type: none"> <li>▪ Supports sustainable travel and sustainable transport improvements</li> </ul>
<b>BuS17: Walking and Cycling</b>	CS17	<ul style="list-style-type: none"> <li>▪ Supports the provision of walking and cycling facilities and links to wider network</li> </ul>
<b>BuS18: Housing Provision</b>	CS1, CS2, CS18	<ul style="list-style-type: none"> <li>▪ Supports the provision of housing and the location of development as contained within the Core Strategy Local Plan.</li> <li>▪ Expects development to respect the character of the area</li> <li>▪ Seeks the protection of residential amenity</li> <li>▪ Supports highway safety</li> <li>▪ Safeguards the amenity of existing residents.</li> <li>▪ Seeks suitable site access</li> </ul>

Barrow upon Soar Neighbourhood Plan Policy	Charnwood Local Plan 2011-2028 Core Strategy Policies	Explanation of Barrow upon Soar Neighbourhood Plan Conformity with the Charnwood Local Plan Core Strategy
<b>BuS19: Meeting the Housing Needs of Older People</b>	CS1,CS2, CS3, CS17	<ul style="list-style-type: none"> <li>▪ Seeks an appropriate mix of housing types having regard to identified housing needs</li> <li>▪ Supports development strategy contained within the Charnwood Local Plan Core Strategy and sites should have good access to local facilities</li> <li>▪ Responds positively to sustainable development which contributes to meeting development needs.</li> <li>▪ Seeks the provision and utilisation of sustainable forms of transport</li> <li>▪ Supports new development which respects the character of the area</li> <li>▪ Safeguards the amenity of existing residents</li> </ul>
<b>BuS20: Sileby Road</b>	CS1, CS2, CS6, CS10, CS13, CS16	<ul style="list-style-type: none"> <li>▪ Assist in the delivery of the employment land requirements of the Charnwood Core Strategy Local Plan</li> <li>▪ Seeks improvements in biodiversity</li> <li>▪ Seeks the provision of flood mitigation measures and the management of surface water run off</li> <li>▪ Protection of amenity</li> </ul>
<b>BuS21: Rural Economy</b>	CS2, CS10, CS18	<ul style="list-style-type: none"> <li>▪ Supports the sustainable growth and expansion of businesses in the rural economy</li> <li>▪ Allows for the conversion of existing building as well as support for well-designed new buildings.</li> <li>▪ Requires new development to respect the character of the area</li> <li>▪ Seeks to maximise the efficiency of the local road network, no increase in traffic congestion and the protection of highway safety</li> </ul>

## Compliance with European Union obligations

- 22 A neighbourhood plan or Order must be compatible with European Union obligations, as incorporated into UK law, in order to be legally compliant. There are three directives that may be of particular relevance to neighbourhood plans:
- Directive 2001/42/EC on the assessment of the effects of certain plans and programmes on the environment (often referred to as the Strategic Environmental Assessment (SEA) Directive). This seeks to provide a high level of protection of the environment by integrating environmental considerations into the process of preparing plans and programmes.
  - Directive 92/43/EEC on the conservation of natural habitats and of wild fauna and flora and Directive 2009/147/EC on the conservation of wild birds (often referred to as the Habitats and Wild Birds Directives respectively). These aim to protect and improve Europe's most important habitats and species.
- 23 A Strategic Environmental Assessment Screening Report for the Barrow upon Soar Neighbourhood Plan (January 2017) has been used to determine whether or not the contents of the Barrow upon Soar Neighbourhood Plan require a Strategic Environmental Assessment (SEA) in accordance with the European Directive 2001/42/EC and associated Environmental Assessment of Plan and Programmes Regulations 2004. Neighbourhood Plans only require a SEA where they are likely to lead to significant effects. The Screening Report presents an assessment of the Neighbourhood Plan, including an assessment of its effects on the environment. This is also accompanied by a commentary on whether these effects are likely to be significant.
- 24 The outcome of this assessment concludes it is unlikely that there will be any significant environmental effects arising from the Barrow upon Soar Neighbourhood Plan Pre-Submission Draft and therefore will not require a full Strategic Environmental Assessment to be undertaken. The environmental assessment consultation bodies (Historic England, Natural England and the Environment Agency) will be consulted on this Screening Report and responses will be made available.
- 25 The Screening Report also concluded the Barrow upon Soar Neighbourhood Plan is unlikely to have any significant effect on the Natura 2000 network of protected sites, and it is considered that an Appropriate Assessment is not required.
- 26 The Charnwood Local Plan 2011 to 2028 Core Strategy was accompanied by a Habitats Regulations Assessment (HRA) Screening Report to examine whether the plan would have a significant effect upon any European (Natura 2000) site. There are no European sites within the boundaries of Charnwood Borough; however, the Screening Report did examine the River Mease SAC, which lies to the west of the Borough, and the Rutland Water SPA and Ramsar site, which lies to the east. The HRA Screening Report concluded that, either alone or in combination with other plans or projects, the Core Strategy is not likely to have a significant effect upon any European site.



- 27 As the scale of development proposed in the Neighbourhood Plan is small scale, the Screening Report concludes that there will be any further affect upon any European site; therefore, it is considered that an Appropriate Assessment is not required.
- 28 Other European directives, such as the Waste Framework Directive (2008/98/EC), Air Quality Directive (2008/50/EC) or the Water Framework Directive (2000/60/EC) do not apply to the Barrow upon Soar Neighbourhood Plan.

## Other basic conditions

- 29 Regulation 32 of the Neighbourhood Planning (General) Regulations 2012 (as amended) sets out another basic condition in addition to those set out in the primary legislation. This is that the making of the neighbourhood plan is not likely to have a significant effect on a European site (as defined in the Conservation of Habitats and Species Regulations 2012) or a European offshore marine site (as defined in the Offshore Marine Conservation (Natural Habitats, &c.) Regulations 2007) (either alone or in combination with other plans or projects). (See Schedule 2 to the Neighbourhood Planning (General) Regulations 2012 (as amended) in relation to the examination of neighbourhood development plans.
- 30 As set out in paragraphs 23 to 28, a Strategic Environmental Assessment Screening Report for the Barrow upon Soar Neighbourhood Plan concluded that the Barrow upon Soar Neighbourhood Plan is unlikely to have a substantial effect on a European site or a European offshore marine site either alone or in combination with other plans or projects.

## Equality Impact Assessment

- 31 The Equality Act 2010 (the Act) places a duty on all public authorities in the exercise of their functions to have regard to the need to eliminate discrimination, to advance equality of opportunity, and to foster good relations between persons who have a “protected characteristic” and those who do not.
- 32 Under the Act a document like a Neighbourhood Plan must be assessed through an Equalities Impact Assessment before it can be adopted or implemented. The Equalities Impact Assessment of the Barrow upon Soar Neighbourhood Plan (Appendix 1) has found no negative impacts on any protected characteristic by reference to data or evidence. As a result, no recommendations are made and the assessment finds the Neighbourhood Development Plan to be appropriate and that the duty prescribed by the Equalities Act 2010 is met.

## Conclusions

- 33 The Basic Conditions as set out in Schedule 4B of the Town and Country Planning Act 1990 and Regulation 32 of the Neighbourhood Planning (General) Regulations 2012 (as amended) are met by the Barrow upon Soar Neighbourhood Plan and all the policies therein. It is therefore respectfully suggested to the Examiner that the Barrow upon Soar Neighbourhood Plan complies with paragraph 8(1)(a) of Schedule 4B of the Act.

# Appendix 1: Barrow upon Soar Neighbourhood Plan - Equalities Impact Assessment

## Introduction

The Equality Act 2010 (the Act) places a duty of care on public bodies to eliminate unlawful discrimination and to promote equality of opportunity for specified equality groups. Under the Act a document like a Neighbourhood Plan must be assessed through an Equalities Impact Assessment before it can be adopted or implemented. The Assessment must address the ‘protected characteristics’ identified within the Act:

- age;
- disability;
- gender reassignment;
- marriage and civil partnership;
- pregnancy and maternity;
- race;
- religion or belief;
- sex; and
- sexual orientation.

The purpose of an Equality Impact Assessment is to help understand and ultimately protect the groups identified above from any adverse impact. This Assessment considers the needs of these particular groups and how they might be affected by the Barrow upon Soar Neighbourhood Plan.

## Methodology

The assessment considers whether the Plan has a positive, negative or neutral impact on each of the protected characteristics (in so far as data is available) by reference to the Key Issues and Policies of the Plan. Where an adverse impact is identified the Assessment considers whether that impact is high, medium or low.

**High impact:** a significant potential impact, risk of exposure, history of complaints, no mitigating measures in place etc.

**Medium impact:** some potential impact exists, some mitigating measures are in place, poor evidence.

**Low impact:** almost no relevancy to the process, e.g. an area that is very much legislation-led.

## Baseline Data

This Assessment has relied on Census data for 2011 published by the Office for National Statistics. Data is available for Barrow upon Soar for age, disability, race, religious belief and sex. There is no known data for gender reassignment, pregnancy and maternity or sexual orientation.

In 2011 there were 5,956 people living in Barrow upon Soar. 48.2% were Male and 51.8% were Female. By Comparison, the figures for the United Kingdom were 49.3% (Male) and 50.7% (Female).

18.8% of the population was 0-15 years old and 17.9% were 65 or over. The UK proportion of over 65's was 16.3% and 18.9% for 0-15's.

2.9% of the population was from a black or minority ethnic background. The proportion of the UK population classed as 'non-white' was 14.3%.

64.3% of the population was Christian and 1.5% other religions including Buddhist, Hindu, Jewish, Muslim and Sikh. By comparison 59.4% of the UK population consider themselves to be Christian whilst 8.3% considered themselves to be Buddhist, Hindu, Jewish, Muslim or Sikh.

6.7% of residents considered that their day-to-day activities were limited a lot through health and disability and a further 9.4% considered that their activities were limited a little. The comparable proportions for the UK were 8.9% (limited a lot) and 9.3% (limited a little).

54.6% of people who were 16 or over were married or in a registered civil partnership compared to 48.7% of people in the UK.

Gender reassignment and sexual orientation are generally invisible characteristics for which little reliable data exists at local level. There was also no data available for pregnancy or maternity.

## Summary

Generally, the proportion of Male/Females is comparable to the national picture.

The proportion of older people is slightly higher than the national picture, common with rural suburbs on the edge or fringe of larger cities.

The proportion of BMEs is noticeably lower than the national picture, common with rural suburbs on the edge or fringe of larger cities.

The proportion of Christians is higher to the national average, whilst the proportion of other religions is markedly lower.



# Key Issues and Policies of the Barrow upon Soar Neighbourhood Plan

The Neighbourhood Plan identifies the following key issues for Barrow upon Soar;

Improving local services and facilities, particularly healthcare

Protecting green areas in the village

Local traffic congestion

Protecting the countryside

Village centre car parking

Conserving local heritage

A new community centre

Meeting local housing needs

Better public transport

More local employment opportunities

These issues are reflected in the Vision for the Barrow upon Soar Neighbourhood Plan;

Barrow upon Soar retains its village character

A vibrant village centre

Key services and facilities are retained and there is a new community centre

Important open areas have been protected

New homes provide for local housing needs

Our heritage is protected and is reflected in the design of new developments

There are good transport links between different parts of the village

The Neighbourhood Plan contains a suite of 21 policies to deliver against that vision and respond to the issues.

## Impact of Policies on Groups with Protected Characteristics

### Age

Policy BuS19 requires new developments to deliver a mix of housing types to reflect evidence of need, noting in particular the need to demonstrate how the housing needs of older households will be met. Although there is no specific policy on affordable housing, the Neighbourhood Plan recognises there is a good supply of affordable housing in the village and any new developments of ten or more dwelling will be required to provide 30% affordable housing, as detailed in the Charnwood Local Plan Core Strategy.

Policy BuS7 requires local green spaces to be protected and enhanced and development will not normally be supported on these spaces. As green spaces

include spaces which have recreational value this is likely to benefit, in particular, the young who are engaged in play and this is considered to have potential for a positive impact.

Policy BuS14 supports the provision of new or improved infrastructure, including sport and recreation provision, school places, community centre, health centre and library. These improvements are considered to have a strong benefit for young and old alike and are considered to have a positive impact.

Furthermore, Policy BuS8 makes provision for the retention of community services and facilities and Policy BuS9 seeks a diverse range of uses in the Village Centre. Some of Barrow upon Soar's services include primary school, secondary school, shops, a surgery, churches, pubs and sports and recreation facilities. Policy BuS11 resists the relocation of the Health Centre from the village centre Policy BuS12 supports the provision of an additional primary school and Policy BuS13 supports the provision of a new community centre. This is seen as important for the long-term sustainability of Barrow upon Soar and their retention is considered to have a strong benefit for young and old alike and is considered to have a positive impact.

### Disability

Policies BuS18, BuS19 and BuS21 all require new development to have safe and suitable access to the site for all and consequently there is potential for a positive impact on this characteristic.

In requiring new developments to provide for a mix of homes to reflect evidence of need (Policy BuS19) there is a possibility that homes could be sought to the benefit of people with disabilities. However, the lack of evidence to include a specific requirement by reference to type of disability prevents a recommendation by this assessment for modification to the policy and leads to a conclusion that Policy BuS19 perhaps has only the potential for a neutral impact. There is no evidence, however, that would suggest a negative impact.

Policies BuS17 and BuS19 require the retention and provision of some footpath links. This has the potential for a positive impact on this characteristic although the degree will be dependent on the nature and definition of individual disabilities.

### Gender reassignment

The potential to secure high quality design under Policy BuS6 may benefit the public realm and the opportunity for all the community to enjoy their built environment. Any improvement in sense of place and civic pride is generally believed to lead to positive places where people are better able to express themselves without fear of recrimination or hate crime. As a result, there is potential for a positive impact on this protected characteristic. However, due to the limited data related to this characteristic and the potential for tangible impacts being unknown this assessment concludes the impact to be neutral.

### Marriage and civil partnership

This assessment found no impacts on this protected characteristic.

### Pregnancy and maternity

There are potential benefits for this protected characteristic from the retention of key services and potential for their replacement by equivalent or better provision, such as improved/new plays areas (Policies BuS7, BuS8, BuS9, BuS11, BuS14); a new

community centre with the potential for hosting local groups (BuS13), and for housing to meet local needs including family accommodation (Policy BuS19). These impacts might be considered to be positive but the lack of data for this characteristic and any tangible evidence suggests that the impact should be considered neutral.

### Race

This assessment found no impacts on this protected characteristic.

### Religion or belief

There is a potential benefit for this protected characteristic from the protection of key services and facilities (Policies BuS8 and BuS13), including a new Community Centre, with potential opportunities for multi-faith worship. However, the uncertain prospects for demand and delivery draw the same conclusion that there is only a neutral impact although the potential for positive impacts should again be noted.

### Sex

This assessment found no impacts on this protected characteristic.

### Sexual orientation

The potential to secure high quality design under Policy BuS6 may benefit the public realm and the opportunity for all the community to enjoy their built environment. Any improvement in sense of place and civic pride is generally believed to lead to positive places where people are better able to express themselves without fear of recrimination or hate crime. As a result there is potential for a positive impact on this protected characteristic. However, due to the limited data related to this characteristic the potential for tangible impacts is unknown and as a consequence this assessment concludes the impact to be neutral.

## Conclusion

The Barrow upon Soar Neighbourhood Plan provides a suite of policies to respond to the vision for the benefit of the local community including protected characteristics but perhaps most particularly older people, young people, mothers to be and with young children, disabled people and those with limited mobility.

The Neighbourhood Plan does not explicitly address the needs of racial or religious groups, or transgender, gay or lesbian groups, or inequalities of sex. However, the Neighbourhood Plan seeks a range of housing types, and seeks retention of and improvements in facilities and services which will benefit these groups equally. It also seeks to provide a higher quality public realm where people with protected characteristics will be less liable to be subject to hate crime.

In conclusion, this assessment has found no negative impacts on any protected characteristic by reference to data or evidence. As a result, no recommendations are made and the assessment finds the Barrow upon Soar Neighbourhood Plan to be appropriate and that the duty of care prescribed by the Equalities Act 2010 is met.